



GMT MONTHLY MEMBERSHIP PROGRESS REPORT

Results as of: 1/31/2020

GMT Constitutional Area 5 - E, Group P

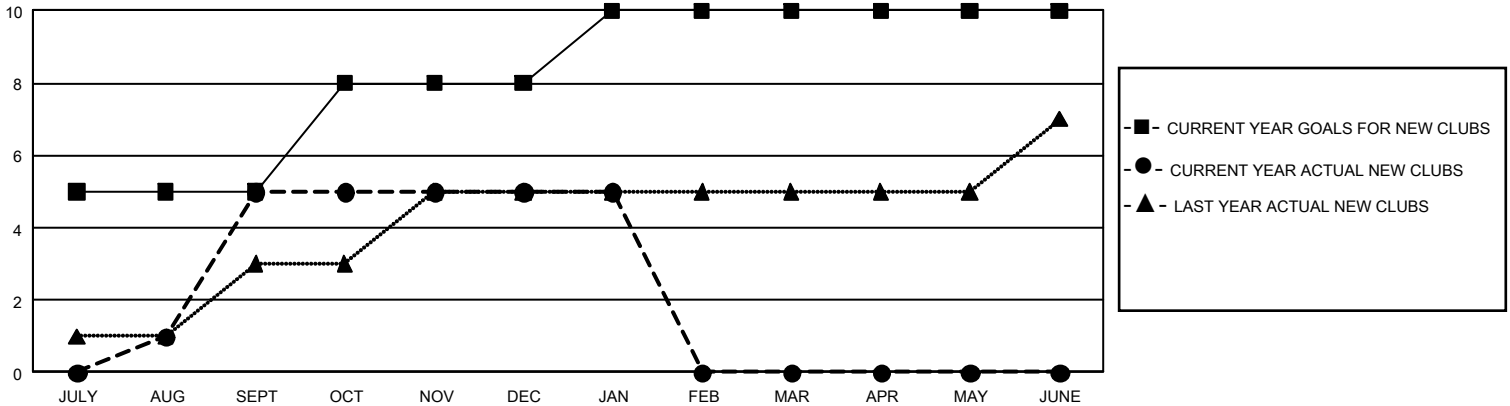
GMT: OPEN

REPORT DOES NOT INCLUDE CLUBS IN UNDISTRICTED AREAS.

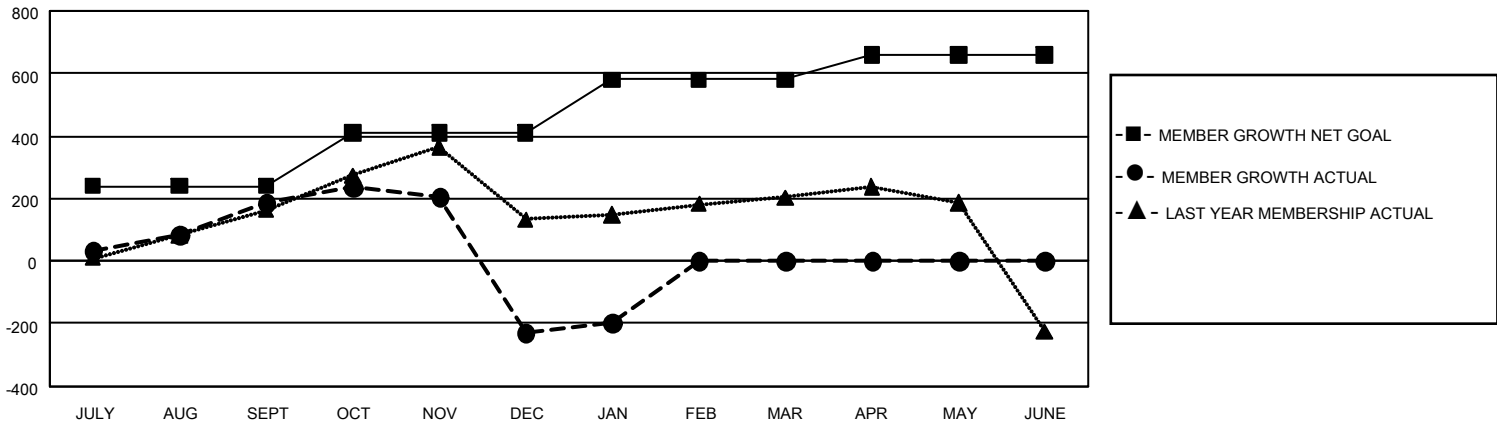
Clubs			
RESULTS FOR 2019-2020			
QUARTER	NEW CLUB GOAL	NEW CLUBS	DROPPED CLUBS
JULY/AUG/SEPT	15	5	0
OCT/NOV/DEC	9	0	2
JAN/FEB/MAR	6	0	2
APR/MAY/JUNE	0	0	0

Members			
RESULTS FOR 2019-2020			
QUARTER	MEMBER GROWTH NET GOAL	MEMBER GROWTH ACTUAL	DROPPED MEMBERS ACTUAL (including transfers)
JULY/AUG/SEPT	720	359	140
OCT/NOV/DEC	510	152	543
JAN/FEB/MAR	510	72	33
APR/MAY/JUNE	240	0	0

GOALS AND ACTUAL NEW CLUBS CUMULATIVE



GOALS AND ACTUAL MEMBERS CUMULATIVE



DROPPED CLUBS: 4	106 CLUBS OF 295 ADDED 1 OR MORE NEW MEMBERS	<u>GENDER DISTRIBUTION</u> MALE 3,996 (52.30%) FEMALE 3,644 (47.70%)
<u>DROPPED MEMBERS</u> DECEASED 16 CLUB CANCELLED 49 OTHER 651 <hr/> TOTAL 716	CLICK HERE FOR CUMULATIVE MEMBERSHIP DATA	TOTAL FAMILY UNIT MEMBERS 395 FAMILY MEMBERS PAYING HALF DUES 212